

User Guide

PLEASE READ & SAVE THESE ORIGINAL INSTRUCTIONS

Image Spot™

This guide applies to the following Rosco Image Spot models:

Image Spot IP40

Black (296000040401)

White (296000040402)

Silver (296000040403)

Image Spot IP65

Black (296000040651)

White (296000040652)

Silver (296000040653)

Image Spot IP65 w/DMX Cable

Black (296000041651)

White (296000041652)

Silver (296000041653)



TABLE OF CONTENTS

Introduction	4
Important Safeguards	4
Unpacking	7
Installing Lens Tube.....	8
Wiring	9
Mounting	10
Gobo Projection	11
Focusing.....	12
Dimming Control.....	12
DMX Operation.....	13
Diffusion Filters.....	15
Dichroic Color Filters.....	16
Accessories.....	17
Ordering Gobos & Permacolor Filters.....	18
Technical Specifications.....	19
Warranty	20

Information and specifications in this document are subject to change without notice.

Rosco assumes no responsibility or liability for any errors or inaccuracies that may appear in this manual.

INTRODUCTION

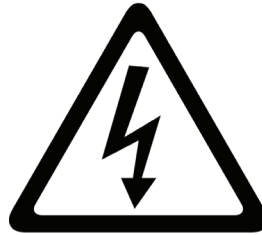
Congratulations on your purchase of a Rosco Image Spot projector. Designed to provide crystal-clear imaging and spot illumination, the Image Spot is quick and easy to set up with convenient on-board dimming or remote DMX controls. Image Spot is available in durable indoor IP40 and outdoor IP65 versions. To ensure efficient and safe operation, please take a few moments to read this manual completely.

IMPORTANT SAFEGUARDS

The symbols below are used throughout this manual to identify important safety information. Heed all warnings and safety information.



Warning, Danger or Caution.



Risk of Electric Shock.

Risk of severe electric shock.
Risk of personal injury.



PREVENTING ELECTRIC SHOCK

This machine uses mains electrical power at 90-253VAC inclusive. When directly contacted, such voltages are hazardous to human life. Follow all local electrical codes and take precautions when using this product.

This product is designed to operate from three-wire power systems, where one of the wires is a safety ground. DO NOT disconnect the safety ground, or use extension cords or adapter plugs to connect this machine to a two-wire system. Operation without a safety ground may result in hazardous electrical shock.

Use only extension cords that are of appropriate length and are rated for Image Spot's specified voltage and current. If an extension cord shows signs of wear or gets warm to the touch, discontinue its use and obtain a cord with a higher current rating. Improper extension cords are hazardous and may result in poor performance due to excessive voltage drop.

Disconnect unit from power source before servicing and when not in use.



MAINTAINING SAFE OPERATION

Do not look directly into the Image Spot projector. Prolonged exposure to the light beam can cause damage to eyesight.

Use only Rosco spare parts and accessories so as to not void the product warranty.

The Image Spot's surface temperature can approach 150°F (65°C) during operation. Keep minimum 4 inches (10cm) distance away from flammable materials / objects. Contact with the fixture during, or immediately following, operation may result in burns.

Allow the unit to cool before attempting to service.

Rosco Image Spot must only be serviced by a qualified technician.

Rosco Image Spot is not certified for use in hazardous locations.

Rosco Image Spot is designed for operation within the range of 14° to 104°F (-10° to +40°C).

Ensure Rosco Image Spot is stored within the range of -4° to 140°F (-20° to +60°C).

UNPACKING

Carefully remove the unit from the box.

Do not attempt to operate Rosco Image Spot projector if there are any signs of physical damage. In case of damage, contact your local Rosco dealer.

Your Rosco Image Spot projector requires that an Image Spot focusing lens tube (purchased separately) be inserted into the opening on the front of the unit prior to operation.

Three lens options are available, providing Narrow, Medium and Wide beam angles. The size of the image or the beam angle can be adjusted by replacing the lens tube with an alternate size:

Item No. 296000100019	Narrow	FL85 - 19°
Item No. 296000100025	Medium	FL60 - 25°
Item No. 296000100030	Wide	FL50 - 30°

INSTALLING LENS TUBE

IP40 Units: Insert the small diameter end of the lens tube into the opening on the front of the projector.

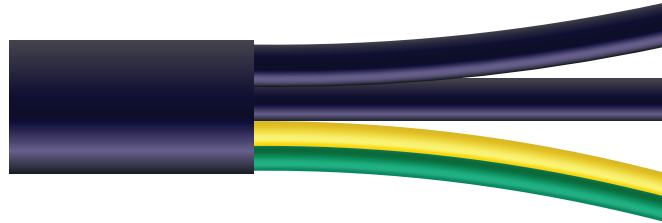
IP65 Units: Slip the 2 provided O-rings onto the grooves on the back end of the lens tube. Gently insert the end of the lens tube with O-rings into the opening on the front of the projector.



WIRING

Your Rosco Image Spot projector will arrive with an unterminated power cord attached to the unit. Wiring to an appropriate connector (not included with Image Spot purchase) or to line voltage should be performed by a qualified electrician and is the responsibility of the installer or end user. The power cord wiring code is as follows:

Core No1:	Live (Hot) Lead
Core No2:	Neutral Lead
Green/Yellow:	Ground



Ensure the correct power connections have been made to the Image Spot projector. The fixture will immediately illuminate upon receiving power.

MOUNTING

The Image Spot projector can be installed in the desired location via the center hole in the yoke. Adjust pan as required. Adjust and fix the tilt of the projector via (1) the knurled thumb knob or (2) optional hex screw (supplied with Image Spot) on the side of the yoke.

1



2



GOBO PROJECTION

Prior to operating the Image Spot projector insert an Image Spot gobo into the gobo cassette located on the underside of the fixture. Gobos with logos or other oriented graphics should be inserted upside down and backwards for proper projection. Check to ensure the gobos are free of dust, fingerprints and other residue prior to inserting the cassette into the accessory slot. Be sure to tighten the thumb screws on the gobo cassette after re-inserting to maintain protection from dust and moisture. A flat tipped screw driver can be used for additional torque to tighten the thumb screws. For optimum image quality, use Rosco Image Spot gobos, which feature custom bezels that fit securely inside the Image Spot gobo cassette.



To avoid possible ingress of dirt and moisture, orient the Image Spot projector with the gobo cassette on the underside of the unit.

FOCUSING

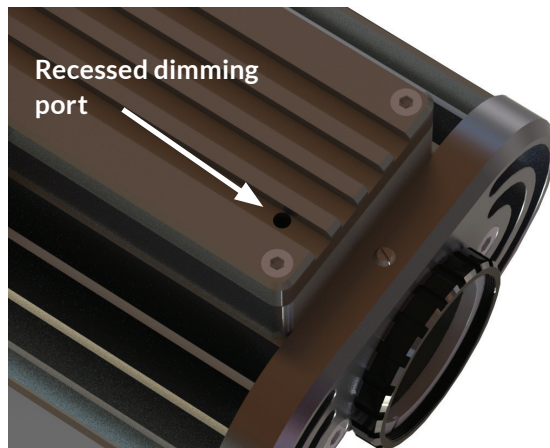
Adjust the coarse focus of the unit by moving the lens tube inward/outward from the projector. The fine focus can be adjusted by rotating the lens tube clockwise or counter-clockwise.

Due to the ultra-clear optics of the Image Spot projector, it is advised to keep the optic path clean of dust and debris. Use a non-abrasive micro-fiber cloth with Rosco Lens Cleaner to clean the Image Spot lenses and any glass gobos or Permacolor dichroic glass filters you may have installed.

DIMMING CONTROL

The Rosco Image Spot projector offers two modes of control: Manual dimming operation or user-supplied DMX512 data input.

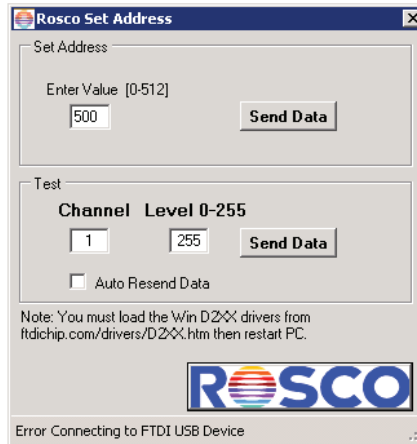
In Manual mode the Image Spot projector beam intensity can be adjusted using a flat tip screwdriver (0.118"/3mm width). Insert the screwdriver into the recessed dimming port located on the top of the fixture towards the front. Turn the screw clockwise for brighter output and counter-clockwise for dimmer output.



DMX OPERATION

A single channel is required for output intensity control via DMX. In order to set the DMX address, an optional DMX Programming Cable (sold separately) is needed, as well as the free Image Spot Addressing Software that can be downloaded at www.rosco.com/ImageSpot.

To set the DMX address on the Image Spot IP40 unit, you will need the USB to RJ45 Cable accessory, sold separately. Plug the USB connector into the computer running the Image Spot Addressing Software, and the RJ45 connector into the receiver on the rear panel of the fixture. Follow the prompts from the software to set address (set value). The output of the unit can also be tested by entering a value between 255 (100%) and 1 (0%).

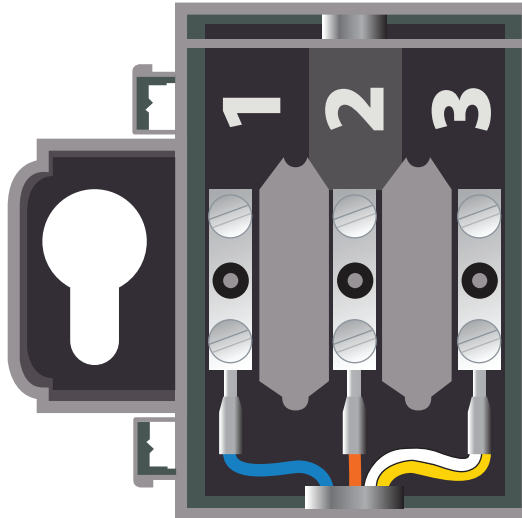


DMX OPERATION

The Image Spot IP65 units can be ordered with a factory-installed 2m length of DMX cable that features a water-proof gland. To set the fixture's DMX address, you will need the Image Spot USB to RS485 Programming Cable accessory (sold separately). Plug the USB connector into the computer running the Image Spot Addressing Software and wire the cable's multi-pin terminal block to the bare-ends of the fixture's DMX cable using the following terminal assignment:

- o Terminal 1 Data + (Blue)
- o Terminal 2 Data - (Orange)
- o Terminal 3 Ground (White/Yellow)

When the fixture recognizes a valid DMX signal, control of the unit will default to DMX. An interruption of the DMX signal will cause the Image Spot projector to revert to manual control, however the last acquired output setting will be maintained.



DIFFUSION FILTERS

An optional Image Spot OPTI-FLECS™ Filter Pack is available and features three pre-cut, 43mm round diffusion filters that soften Image Spot's beam for spot lighting purposes. The OPTI-FLECS Filter Pack includes:

- Retaining Ring
- Soft Diffusion – 43mm dia.
- Smoothing Frost – 43mm dia.
- Double Powder Frost – 43mm dia.



To install OPTI-FLECS filters into the Image Spot: insert the 43mm disc into the front end of the lens tube and then secure the filter into place using the Retaining Ring.

DICHROIC COLOR FILTERS

Rosco Permacolor dichroic filters are available to provide fully customizable, long-term color options for your Image Spot. For optimal performance and installation, specify Image Spot Permacolor Filters that feature custom bezels to fit securely inside the Image Spot gobo cassette.

Install the Image Spot Permacolor Filter into the gobo cassette. The gobo cassette is deep enough to accept both an Image Spot Gobo and an Image Spot Permacolor Filter. It is recommended that the Permacolor Filter be installed on the “lamp-side” of the two. When properly installed, the order should be lamp -> Image Spot Permacolor Filter -> Image Spot Gobo -> Lens Tube.



ACCESSORIES

Item Number	Description
296000010019	Image Spot Narrow Angle Lens Optic / 19°
296000010025	Image Spot Medium Angle Lens Optic / 25°
296000010030	Image Spot Wide Angle Lens Optic / 30°
296000010013	Image Spot OPTI-FLECS Filter Pack with Retaining Ring
296000010012	Image Spot Safety Cable, 3-ft (1m)
296000010011	Image Spot IP65 USB to RS485 Programming Cable
296000010017	Image Spot IP40 USB to RJ45 Programming Cable

ORDERING GOBOS & PERMACOLOR FILTERS

Gobos and Permacolor Dichroic Filters for the Image Spot projector can be easily ordered through any Rosco dealer. Visit www.rosco.com to locate the dealer nearest you and provide them with the information below.

Standard Gobos

XXXXX-SPOT Image Spot Standard Gobo, XXXXX = the five digit standard gobo number

Custom Gobos

2507210ISPOT Image Spot Custom Steel Gobo
260CUSBWOSPO Image Spot Custom B&W Glass Gobo
260CUS1COSPO Image Spot Custom One-Color Glass Gobo
260CUS2COSPO Image Spot Custom Two-Color Glass Gobo
260CUSMCOSPO Image Spot Custom Multi-Color Glass Gobo

Permacolor Dichroic Filters

1203-XXXX-SPOT Image Spot Permacolor Dichroic Glass Filter, XXXX = the four digit color number

For assistance ordering or specifying gobos or Permacolor filters for the Image Spot, please contact our Gobo Customer Service Centers:

Americas	Toll Free in the US: 866-228-2256	customgobo@rosco.com
	Outside of the US: 512-388-5299	
EMEA	+44 (0)20 8659 2300	salesadmin@rosco.com

TECHNICAL SPECIFICATIONS

Power

Input Voltage: Universal 100-230VAC+/-10%
Maximum Power Consumption: 45W

Physical Characteristics

Dimensions: 7.8in. x 4.8in. x 3.2in.
(excluding yoke) (198mm x 121mm x 81mm)
Weight: 5.5 lbs. (2.5 kg)

LED

Color Temperature = 5500K
3,000 lumen output
LM-79-08 : 50,000 hours @ 45C

Gobo Specifications Rosco Image Spot Gobo
with custom carrier

Working Environment

Ambient Temp.: Working temperature:
-10°C ~ 40°C (14°F ~104°F)
Humidity: 20 ~ 90% RH non-condensing

Data:
(IP40)

DMX 512 – RJ45 Connector

Optional Cat5e Cable (IP65)

Approvals:

Conforms to UL STD # 62368-1 &
60950-22
Certified to CSA STDS C22.2
62368-1 & # 60950-22

Ratings:

IP40 Indoor Use Only
IP65 Outdoor Use in Wet
Environments

Environmental:

Disposal of Old Electrical &
Electronic Equipment



This symbol on the product or on
its packaging indicates that this
product shall not be treated as
household waste.

3-YEAR LIMITED WARRANTY

Rosco Laboratories warrants to the first retail purchaser that this Product will be free from defects in workmanship and material for a period of three years from the date of original purchase. For warranty service you must be able to provide proof of purchase. Should this Product prove defective during the warranty period, please contact your local Rosco office for Return Authorization. No warranty service will be performed without Return Authorization. At Rosco's sole discretion, covered Products will be repaired or replaced with new or refurbished equipment or a model of like kind and quality. Exchanged or replaced parts and Products assume the remaining warranty period of the original product covered by this limited warranty. You are responsible for securely packaging the defective Product and returning it to Rosco as per the instructions of the Return Authorization. Within North America, Rosco will ship the repaired or replaced Product to you freight prepaid. Shipments to other locations will be made freight collect.

This warranty is non-transferable and does not extend beyond the first retail purchase of the Product. This warranty does not cover damage to the Rosco Product caused by parts not manufactured, distributed or certified by Rosco.

Rosco is not obligated to provide warranty service should the Product fail to be properly maintained or fail to function properly as a result of misuse, abuse, improper installation, neglect, improper shipping, damage caused by disasters such as flood, fire and lightning, improper electrical current or unauthorized service repairs other than those by a Rosco Authorized Servicer.

If a claimed defect cannot be identified or reproduced, you will be held responsible for the costs incurred. Unless otherwise stipulated by state law, all warranties expressed or implied are limited to the three (3) year period of this warranty.

THE WARRANTY AND REMEDY PROVIDED ABOVE ARE EXCLUSIVE AND IN LIEU OF ALL OTHER EXPRESS OR IMPLIED WARRANTIES INCLUDING BUT NOT LIMITED TO THE IMPLIED WARRANTIES OF MERCHANTABILITY, NON-INFRINGEMENT OR FITNESS FOR A PARTICULAR PURPOSE. EXCEPT AS PROVIDED IN THIS WRITTEN WARRANTY AND UNLESS EXCLUSIONS ARE SPECIFICALLY FORBIDDEN BY STATE LAW, NEITHER ROSCO NOR ITS AFFILIATES WILL BE LIABLE FOR ANY LOSS, INCONVENIENCE, OR DAMAGE, INCLUDING DIRECT, SPECIAL, INCIDENTAL OR CONSEQUENTIAL DAMAGES, INCLUDING INJURY TO PERSONS OR PROPERTY, RESULTING FROM THE USE OR INABILITY TO USE THE ROSCO PRODUCT, WHETHER RESULTING FROM BREACH OF WARRANTY OR ANY OTHER LEGAL THEORY.



www.rosco.com/imagespot

