

rosco



**guide to**  
filmmaking tools

no.3

# CONTENTS

E-COLOUR+ .....	3
CINEGEL .....	5
FILTER KITS .....	10
SLEEVES .....	11
FILTER ACCESSORIES .....	12
BUTTERFLIES AND OVERHEADS .....	13
ROSCOSHADES .....	14
ROSCOVUE .....	15
TRUCOLOR IR CAMERA FILTER .....	16
LIGHT CONTROL .....	16
LITEPAD .....	17
SETTING THE SCENE - BACKDROPS .....	18
PAINT .....	20
INDEX .....	22



Rosco's comprehensive system of European colour filters for film, theatre and video production. E-Colour+ includes different filters and materials for colour correction, colour effects, diffusion and reflection. They're manufactured with the latest dye formulations and bonding technology to assure the highest levels of reliability. E-Colour+ complies with flammability test BS4944 pt1.

E-Colour+ filters are available in 1.22m x 7.62m rolls as well as 61cm x 53cm and 1.22m x 53cm sheets

## Colour Effects Filters

No.	Colour
002	Rose Pink
003	Lavender Tint
004	Medium Bastard Amber
007	Pale Yellow
008	Dark Salmon
009	Pale Amber Gold
010	Medium Yellow
013	Straw Tint
015	Deep Straw
017	Surprise Peach
019	Fire
020	Medium Amber
021	Gold Amber
022	Dark Amber
024	Scarlet
025	Sunset Red
026	Bright Red
027	Medium Red
029	Plaza Red
035	Light Pink
036	Medium Pink
039	Pink Carnation
046	Dark Magenta
048	Rose Purple
049	Medium Purple
052	Light Lavender
058	Lavender
061	Mist Blue
063	Pale Blue
068	Sky Blue
071	Tokyo Blue
075	Evening Blue
079	Just Blue
085	Deeper Blue
088	Lime Green

No.	Colour
089	Moss Green
090	Dark Yellow Green
100	Spring Yellow
103	Straw
101	Yellow
102	Light Amber
104	Deep Amber
105	Orange
106	Primary Red
107	Light Rose
108	English Rose
109	Light Salmon
110	Middle Rose
111	Dark Pink
113	Magenta
115	Peacock Blue
16	Medium Blue Green
117	Steel Blue
118	Light Blue
119	Dark Blue
120	Deep Blue
121	Leaf Green
122	Fern Green
124	Dark Green
126	Mauve
127	Smokey Pink
128	Bright Pink
131	Marine Blue
132	Medium Blue
134	Golden Amber
135	Deep Golden Amber
136	Pale Lavender
137	Special Lavender
138	Pale Green
139	Primary Green
140	Summer Blue
141	Bright Blue
142	Pale Violet
143	Pale Navy Blue

No.	Colour
144	No Colour Blue
147	Apricot
148	Bright Rose
151	Gold Tint
152	Pale Gold
153	Pale Salmon
154	Pale Rose
156	Chocolate
157	Pink
158	Deep Orange
159	No Color Straw
161	Slate Blue
162	Bastard Amber
164	Flame Red
165	Daylight Blue
166	Pale Red
169	Lilac Tint
170	Deep Lavender
172	Lagoon Blue
174	Dark Steel Blue
176	Loving Amber
179	Chrome Orange
180	Dark Lavender
181	Congo Blue
183	Moonlight Blue
182	Light Red
184	Cosmetic Peach
185	Cosmetic Burgundy
186	Cosmetic Silver Rose
187	Cosmetic Rouge
188	Cosmetic Highlight
189	Cosmetic Silver Moss
190	Cosmetic Emerald
191	Cosmetic Aqua Blue
192	Flesh Pink
193	Rosy Amber
194	Surprise Pink
195	Zenith Blue
196	True Blue
197	Alice Blue
198	Palace Blue
322	Soft Green
323	Jade
325	Mallard Green
327	Forest Green
328	Follies Pink
332	Special Rose Pink
341	Plum
343	Special Medium Lavender
344	Violet
345	Fuchsia Pink

# E-COLOUR+

## Colour Effects Filters cont.....

No.	Colour
352	Glacier Blue
353	Lighter Blue
354	Special Steel Blue
363	Special Medium Blue
366	Cornflower
5017	Light Flame
5018	Flame
5041	Salmon
5042	Deep Salmon
5047	Light Rose Purple
5059	Indigo
5077	Green Blue
5084	Damson Violet <b>New</b>
5085	French Lilac <b>New</b>
5201	New Schubert Pink
5202	Max Blue
5205	Turquoise
5207	Lyric Blue
5209	Dewberry
5211	Ice Blue <b>New</b>
5264	Venetian Blue <b>New</b>
5287	Fuji Blue <b>New</b>
5318	Mayan Sun
5321	Soft Golden Amber
5336	Aztec Gold <b>New</b>
5376	Bermuda Blue <b>New</b>
5378	Twilight Blue
5404	Wisteria
5423	Barely Blue
5426	Blueberry
5429	Lapis Blue
5431	White Cap
5433	Surf Blue
5436	Capri Blue
5439	Riviera Blue
5454	Olympia Green <b>New</b>
5455	Tarragon <b>New</b>
5461	Grotto Green <b>New</b>
5463	Prussian Green <b>New</b>
5489	Sunset Pink
5499	Hyacinth

### 700 series

No.	Colour
701	Provence
702	Special Pale Lavender
704	Lily
705	Lily Frost
707	Ultimate Violet
709	Electric Lilac
711	Cold Blue
712	Bedford Blue
713	J.Winter Blue
714	Elysian Blue
715	Cabana Blue
716	Mikkel Blue
717	Shanklin Frost
718	Half Shanklin Frost
719	Colour Wash Blue
720	Durham Daylight Frost
721	Berry Blue
722	Bray Blue
724	Ocean Blue

No.	Colour
725	Old Steel Blue
728	Steel Green
729	Scuba Blue
730	Liberty Green
735	Velvet Green
736	Twickenham Green
738	JAS Green
744	Dirty White
746	Brown
747	Easy White
749	Hanover Rose
750	Boston Frost
763	Wheat
764	Sun Colour Straw
765	Stamford Yellow
767	Oaklahoma Yellow
770	Burnt Yellow
774	Soft Amber Key 1
775	Soft Amber Key 2
776	Nectarine
777	Rust
778	Millennium Gold
779	Bastard Pink
781	Terry Red
789	Blod Red
790	Moroccan Pink
791	Moroccan Frost
793	Vanity Fair
794	Pretty 'n Pink
795	Magical Magenta
797	Deep Purple
798	Chrysalis Pink

## Diffusion Materials

No.	Colour
214	Full Tough Spun
215	Half Tough Spun
229	Quarter Spun
216	White Diffusion
416	Three Quarter White
250	Half White Diffusion
450	Three Eighths White
251	Quarter White Diffusion
252	Eighth White Diffusion
452	One Sixteenth White
253	Hanover Frost
255	Hollywood Frost <b>New</b>
256	Half Hanover Frost
257	Quarter Hanover Frost
480	Atlantic Frost
481	Half Atlantic Frost
482	Quarter Atlantic Frost
217	Blue Diffusion
224	Daylight Blue Frost
225	Neutral Density Frost
228	Brushed Silk
231	Light Brished Silk <b>New</b>
129	Heavy Frost
220	White Frost
221	Blue Frost
400	Rolux <b>New</b>
401	Light Rolux <b>New</b>

## Diffusion Materials cont....

No.	Colour
402	Soft Frost <b>New</b>
410	Opal Frost <b>New</b>
420	Light Opal Frost <b>New</b>
404	Half Soft Frost <b>New</b>
414	Full Hilite <b>New</b>
430	Grid Cloth <b>New</b>
432	Light Grid Cloth <b>New</b>
434	Quarter Grid Cloth <b>New</b>

## Colour Correction Filters

No.	Colour
201	Full CT Blue
281	3/4 CT Blue
202	1/2 CT Blue
203	1/4 CT Blue
218	1/8 CT Blue
200	Double Blue
204	Full CT Orange
285	3/4 CT Orange
205	1/2 CT Orange
206	1/4 CT Orange
223	1/8 CT Orange
207	CT Orange +.3 Neutral Density
208	CT Orange +.6 Neutral Density
298	.15 Neutral Density(1/2 stop)
209	.3 Neutral Density (1 stop)
210	.6 Neutral Density (2 stops)
211	.9 Neutral Density (3 stops)
299	1.2 Neutral Density (4 stops)
212	L.C.T. Yellow
213	WF Green
236	HMI to Tungsten
219	Fluorescent Green
241	Fluorescent 5700°K
242	Fluorescent 4300°K
243	Fluorescent 3600°K
244	Plus Green
245	Half Plus Green
246	Quarter Plus Green
278	Eighth Plus Green
247	Minus Green
248	Half Minus Green
249	Quarter Minus Green
279	Eighth Minus Green
226	U.V. Filter
130	Clear
441	Full CT Straw
442	Half CT Straw
443	Quarter CT Straw
444	Eighth CT Straw

## Reflection Materials

No.	Colour
270	Scrim
271	Mirror Silver
272	Soft Gold Reflector
273	Soft Silver Reflector



The E-Colour+ swatchbook contains samples of all E-Colour+ items.





The Rosco Cinegel range includes over 147 tools for controlling light. Since its introduction in 1970, Cinegel has continually developed and grown to meet the working needs of the professional. In 1974, Cinegel won an Academy Award for technical achievement.

## Daylight Conversion Filters

AMBER–RoscoSun Daylight Conversion Filters are a range of amber filters that lower colour temperature as needed. Although typically used on daylight 5500°K sources to balance with tungsten, the range offers a multitude of technical and aesthetic colour correction possibilities. The material is deep-dyed for heat stability and superior colour transmission.

All materials are 1.22 m x 7.6 m.

No. 3407	RoscoSun CTO	Converts 5500°K daylight to a nominal 2900°K
No. 3411	RoscoSun 3/4 CTO	Converts 5500°K daylight to a nominal 3200°K
No. 3408	RoscoSun 1/2 CTO	Converts 5500°K daylight to a nominal 3800°K
No. 3409	RoscoSun 1/4 CTO	Converts 5500°K daylight to a nominal 4500°K
No. 3410	RoscoSun 1/8 CTO	Converts 5500°K daylight to a nominal 4900°K
No. 3420	RoscoSun Double CTO	Converts 10,000°K daylight to a nominal 2400°K

**STRAW**–RoscoStraw Daylight Conversion Filters are a series of yellowish amber filters that lower colour temperature as needed. The series is offered as a yellower version of the traditional CTO series and is calibrated to the same colour correction and transmission properties. The material is deep-dyed for heat stability and superior colour transmission. All materials are 1.22 m x 7.6 m.

No. 3441	Full Straw (CTS)	Converts 5500°K daylight to a nominal 2900°K
No. 3442	Half Straw (1/2 CTS)	Converts 5500°K daylight to a nominal 3800°K
No. 3443	Quarter Straw (1/4 CTS)	Converts 5500°K daylight to a nominal 4500°K
No. 3444	Eighth Straw (1/8 CTS)	Converts 5500°K daylight to a nominal 4900°K

## Tungsten Conversion Filters

Tungsten Conversion Filters are a range of blue filters that raise colour temperature as needed. Although typically used on tungsten-halogen sources to balance with daylight, the range offers a multitude of technical and aesthetic colour correction possibilities. The material is deep-dyed for heat stability and superior colour transmission. Rolls are 1.22 m x 7.6 m.

No. 3202	Full Blue (CTB)	Boosts 3200°K to nominal 5500°K daylight
No. 3203	Three-Quarter Blue (3/4 CTB)	Boosts 3200°K to nominal 4700°K daylight
No. 3204	Half Blue (1/2 CTB)	Boosts 3200°K to nominal 4100°K daylight
No. 3206	Third Blue (1/3 CTB)	Boosts 3200°K to nominal 3800°K daylight
No. 3208	Quarter Blue (1/4 CTB)	Boosts 3200°K to nominal 3500°K daylight
No. 3216	Eighth Blue (1/8 CTB)	Boosts 3200°K to nominal 3300°K daylight
No. 3220	Double Blue (2X CTB)	Boosts 2800°K to nominal 10,000°K daylight

## Filters for Controlling Carbon Arc and HMI Lighting

A traditional range of filters is also available for Carbon Arc and HMI correction. These filters are all designed to reduce colour temperature in discrete steps. Rolls are 1.22 m x 7.6 m.

No. 3106	Tough MTY For correcting White Flame Arcs to 3200°K Tungsten.
No. 3107	Tough Y1 Pale straw filter for use on HMI and White Flame Arcs.
No. 3102	Tough MT2 Useful as an amber conversion filter for HMI and Arcs.
No. 3114	Tough UV Filter A slightly warm filter that absorbs 90% of UV-A output.
No. 3134	Tough MT54 A pale straw warming filter for Arcs and HMI.
No. 3150	Industrial Vapor <b>New</b> Converts tungsten to Sodium Vapour (street lights)
No. 3152	Urban Vapor <b>New</b> Creates the visual reddish-orange appearance of Sodium Vapour street lights without the green content found in actual Sodium Vapour

## Cinegel Swatchbook

For decades, the cameraman and lighting technician's favourite tool for filter selection. The Cinegel swatchbook contains samples of all Cinegel colour correction filters, diffusion and reflection materials. Also included are separate sections for CalColor, Cinelux and the Storaro Selection.



## Fluorescent Light Filters

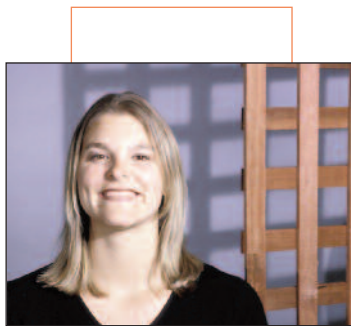
These green and magenta filters are used for adding or removing green, usually when colour correcting fluorescent or industrial discharge lamps. #3304, #3308 and #3310 are particularly useful for U.S. Cool White Fluorescents. All rolls are 1.22 m x 7.6 m. Available as sleeves

No. 3304	Tough Plusgreen Converts daylight to match Cool White fluorescents. Equivalent to CC30 Green.
No. 3309	Tough 3/4 Minus Green <b>New</b> Fluorescent correction for digital photography and video application
No. 3315	Tough 1/2 Plusgreen Adds partial green to daylight and 3200°K sources for balancing with fluorescents and discharge lamps. Equivalent to CC15 Green.
No. 3316	Tough 1/4 Plusgreen Adds partial green to daylight and 3200°K sources for balancing with fluorescents and discharge lamps. Equivalent to CC075 Green.
No. 3317	Tough 1/8 Plusgreen Adds partial green to daylight and 3200°K sources for balancing with fluorescents and discharge lamps. Equivalent to CC035 Green.
No. 3308	Tough Minusgreen Converts cool white fluorescents to nominal daylight by absorbing excess green output. Equivalent to CC30 Magenta.
No. 3313	Tough 1/2 Minusgreen Absorbs excess green from fluorescent and discharge lamps. Equivalent to CC15 Magenta.
No. 3314	Tough 1/4 Minusgreen Absorbs excess green from fluorescent and discharge lamps. Equivalent to CC075 Magenta.
No. 3318	Tough 1/8 Minusgreen Absorbs excess green from fluorescent and discharge lamps. Equivalent to CC035 Magenta.

# CINEGEL DIFFUSION

## Diffusion Materials

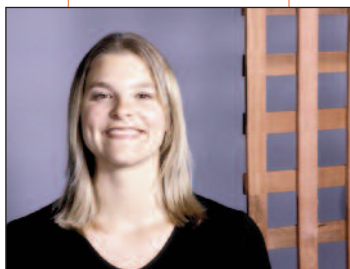
With over 20 different materials, Rosco offers the broadest range of diffusion available. A wide variety of effects is possible, ranging from the slightest "feathering" of a beam edge, to the creation of a broad shadowless expanse. Diffusion materials are included in Rosco's Cinegel range. You'll find samples of each of these materials in Rosco's Cinegel swatchbook. Except as noted, all materials are 1.22 m x 7.6 m.



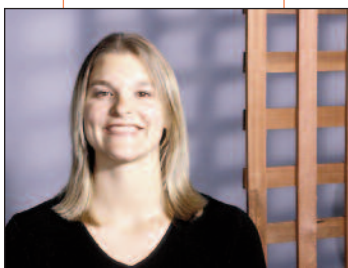
**NO DIFFUSION**



**HILITE**



**HALF TOUGH WHITE**



**OPAL  
TOUGH FROST**

*Shown above are subtle but significant results you can achieve with Rosco diffusion materials. The model, set and film are the same in each photo, only the Rosco diffusion materials were changed.*

**Note:** diffusion results will vary when the diffusion materials is affixed at the source vs in a frame placed at a distance in front of the source.

*Photo credit: Joanne A Calitri  
International Faculty Brooks Institute of  
Photography, Santa Barbara CA*

### GROUP

### PRODUCT

SPUN:

3006 Tough Spun  
3007 Light Tough Spun  
3022 Quarter Tough Spun

FROST:

3008 Tough Frost  
3009 Light Tough Frost  
3010 Opal Tough Frost  
3040 Half Opal (Powder Frost)  
3020 Quarter Opal (Light Opal)  
3046 Velvet Frost  
3047 Light Velvet Frost

WHITE DIFFUSION:

3026 Tough White Diffusion  
3027 Tough 1/2 White Diffusion  
3028 Tough 1/4 White Diffusion

ROLUX:

3000 Tough Rolux  
3001 Light Tough Rolux

GRID CLOTH:

3030 Grid Cloth  
3032 Light Grid Cloth  
3034 Quarter Grid Cloth  
3060 Silent Grid Cloth  
3062 Silent Light Grid Cloth  
3064 Silent Quarter Light Grid Cloth  
3071 Full Blue Grid Cloth  
3072 1/2 Blue Grid Cloth  
3073 1/4 Blue Grid Cloth  
3081 Full Straw Grid Cloth  
3082 1/2 Straw Grid Cloth  
3083 1/4 Straw Grid Cloth  
3090 Moonlight Grid Cloth

SILK:

3011 Tough Silk  
3015 Light Tough Silk

SOFT:

3002/3023 Soft Frost  
3004 Half Soft Frost  
3014 Hilite  
3029 Silent Frost

**Most Diffusion Materials Are Available  
in Sheets – 50cm x 61cm**

# COLOUR CORRECTION

## Sun 85 and Neutral Density Filters

These filters are usually applied to windows for colour correction and/or light intensity reduction. RoscoSun 85 is an amber filter that lowers the colour temperature of daylight to balance with 3200°K sources. Rosco Neutral Density Filters reduce the level of exterior light and bring it within the exposure range of interior light levels. Two additional RoscoSun materials combine Sun 85 conversion with Neutral Density reduction. All materials are deep-dyed for optical clarity. Except as noted, all materials are extra wide 1.52m x 6.09m.

No. 3401	RoscoSun 85 Converts 5500°K daylight to a nominal 3200°K.
No. 3415	Rosco N.15 Reduces light intensity one half stop.
No. 3402	Rosco N.3 Reduces light intensity one stop.
No. 3403	Rosco N.6 Reduces light intensity two stops.
No. 3404	Rosco N.9 Reduces light intensity three stops.
No. 3405	RoscoSun 85N.3 Reduces light intensity one stop and converts daylight to a nominal 3200°K.
No. 3406	RoscoSun 85N.6 Reduces light intensity two stops and converts daylight to a nominal 3200°K.
No. 3421	BlackScrim Perforated material, black on both sides. Reduces light intensity two stops with no effect on Kelvin. Rolls 1.22 m x 7.6 m.
No. 3423	Cinescreen A woven material, black on both sides. Reduces light intensity two stops.
No. 3809	RoscoScrim Similar to BlackScrim above - but silver on one side, with black side functioning as two stop neutral density scrim. Rolls 1.22 m x 7.6 m.

## Acrylic Panels

Daylight Control is also available in 1.22 m x 2.44 m acrylic sheets for daylight correction or light intensity reduction. They offer quick set-up, easy handling and multiple re-use. Ships in packs of five. Also available in 1.52m x 2.44m

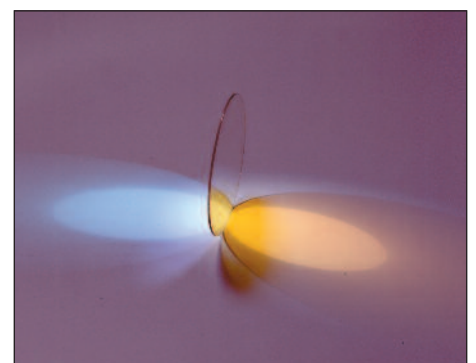
No. 3761	Roscolex 85	Optically clear acrylic panel. Converts 5500°K to a nominal 3200°K.
No. 3751	Roscolex 1/2 CTO	Optically clear acrylic panel. Converts 5500°K to a nominal 3800°K.
No. 3762	Roscolex N.3	Optically clear acrylic panel. Reduces light intensity one stop.
No. 3763	Roscolex N.6	Optically clear acrylic panel. Reduces light intensity two stops.
No. 3764	Roscolex N.9	Optically clear acrylic panel. Reduces light intensity three stops.

## Cinedichro™

Cinedichro™ filters are extremely durable, heat resistant dichroic filters. Cinedichro™ has been engineered to provide true, accurate colour correction, precisely matching industry standards for colour balancing daylight and tungsten light sources. Cinedichro™ filters can be used on most motion picture lighting fixtures — even 6K pars — and have a maximum diameter of 34.2 cm. Please contact Rosco for more information on using Cinedichro™ filters with specific fixtures.

Price according to size. Call for details.

No. 05329210	Cinedichro™ Full Blue CTB
No. 05329410	Cinedichro™ 1/2 Blue CTB
No. 05329810	Cinedichro™ 1/4 Blue CTB
No. 05349710	Cinedichro™ Full CTO
No. 05349810	Cinedichro™ 1/2 CTO
No. 05349910	Cinedichro™ 1/4 CTO
No. 05343010	Cinedichro™ White Diffusion
No. 05800008	IR/UV Filter





## CalColor™

### Academy Award Winner 1999

Calibrated Colour by Rosco is a series of colour effects lighting filters designed specifically to the spectral sensitivity of colour film. The series includes the primary colors Blue, Green and Red, along with the secondary colours Yellow, Magenta and Cyan and the intermediary colours Pink and Lavender. Each colour is designed in four densities: 15, 30, 60 and 90, corresponding to the familiar 1/2, 1, 2 and 3 stop calibrations.

50 cm x 61 cm Sheets

7.62 m x 1.22 m Rolls

No. 4215	15 Blue (1/2 stop)
No. 4230	30 Blue (1 stop)
No. 4260	60 Blue (2 stop)
No. 4290	90 Blue (3 stop)
No. 4307	07 Cyan (1/4 stop)
No. 4315	15 Cyan (1/2 stop)
No. 4330	30 Cyan (1 stop)
No. 4360	60 Cyan (2 stop)
No. 4390	90 Cyan (3 stop)
No. 4415	15 Green (1/2 stop)
No. 4430	30 Green (1 stop)
No. 4460	60 Green (2 stop)
No. 4490	90 Green (3 stop)
No. 4515	15 Yellow (1/2 stop)
No. 4530	30 Yellow (1 stop)
No. 4560	60 Yellow (2 stop)
No. 4590	90 Yellow (3 stop)
No. 4615	15 Red (1/2 stop)
No. 4630	30 Red (1 stop)
No. 4660	60 Red (2 stop)
No. 4690	90 Red (3 stop)
No. 4715	15 Magenta (1/2 stop)
No. 4730	30 Magenta (1 stop)
No. 4760	60 Magenta (2 stop)
No. 4790	90 Magenta (3 stop)
No. 4815	15 Pink (1/2 stop)
No. 4830	30 Pink (1 stop)
No. 4860	60 Pink (2 stop)
No. 4890	90 Pink (3 stop)
No. 4915	15 Lavender (1/2 stop)
No. 4930	30 Lavender (1 stop)
No. 4960	60 Lavender (2 stop)
No. 4990	90 Lavender (3 stop)

The CalColor System is protected under  
U.S. Patent # 6,259,572 issued July 2001.

## Cinelux™

Cinelux is a selection of colour effects filters from the Roscolux range which are produced in rolls 1.22 m x 7.62 m. They are ideally suited for film and television production where larger lighting fixtures are used, and where colour is often mounted on large frames. Cinelux filters are now included in Rosco's Cinegel range and you'll find samples of all these products in the Cinegel swatchbook.

02	Bastard Amber	51	Surprise Pink
302	Pale Bastard Amber	59	Indigo
06	No Color Straw	60	No Color Blue
08	Pale Gold	360	Clearwater
310	Daffodil	62	Booster Blue
12	Straw	362	Tipton Blue
16	Light Amber	364	Bell Blue
316	Gallo Gold	65	Daylight Blue
17	Light Flame	365	Tharon Delft Blue
18	Flame	376	Bermuda Blue
318	Mayan Sun	77	Green Blue
21	Golden Amber	378	Alice Blue
321	Soft Golden Amber	80	Primary Blue
23	Orange	83	Medium Blue
26	Light Red	87	Pale Yellow Green
33	No Color Pink	88	Light Green
333	Soft Blush Pink	89	Moss Green
34	Flesh Pink	91	Primary Green
37	Pale Rose Pink	92	Turquoise
39	Skelton Exotic Sangria	93	Blue Green
41	Salmon	97	Light Grey
42	Deep Salmon	397	Pale Grey
44	Middle Rose	98	Medium Grey
47	Lt. Rose Purple	99	Chocolate

## The Storaro Selection™

Ten colour effects lighting filters designed to the personal specifications of eminent cinematographer Vittorio Storaro. These ten colours represent key chromatic elements of the visible spectrum, and are intended for dramatic effect and strong emotional response. Rolls are 1.22 m x 7.62 m.

2001	Storaro Red	2006	Storaro Azure
2002	Storaro Orange	2007	Storaro Blue
2003	Storaro Yellow	2008	Storaro Indigo
2004	Storaro Green	2009	Storaro Violet
2005	Storaro Cyan	2010	Storaro Magenta

# FILTER KITS

## Colour Effects Kit

This kit contains: twelve (30.48cm x 30.48cm) filters, one of each colour.

### Cool/Warm

103	Straw
110	Middle Rose
205	Half CT Orange
192	Flesh Pink
134	Golden Amber
162	Bastard Amber
122	Fern Green
115	Peacock Blue
245	Half Plus Green
202	Half CT Blue
117	Steel Blue
136	Pale Lavender

### Saturated Colours

101	Yellow
106	Primary Red
139	Primary Green
119	Dark Blue
158	Deep Orange
128	Bright Pink
104	Deep Amber
111	Dark Pink
116	Medium Blue Green
197	Alice Blue
147	Apricot
148	Bright Rose

No. 11009060SKIT - Cool/Warm

No. 11009070SKIT - Saturated Colours

## Colour Correction Kit

This kit contains: twelve (30.48cm x 30.48cm) filters, one of each colour

201	Full CT Blue
202	Half CT Blue
203	Quarter CT Blue
218	Eighth CT Blue
217	Blue Diffusion
221	Blue Frost
204	Full CT Orange
205	Half CT Orange
206	Quarter CT Orange
223	Eighth CT Orange
207	Full CTO +.3NDTO
208	Full CTO +.6ND

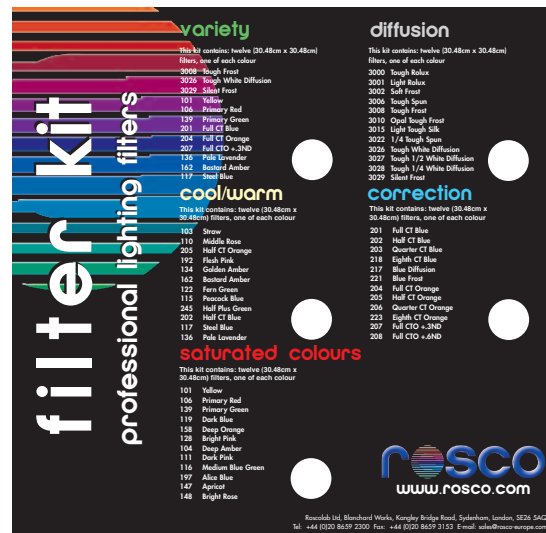
No. 11009030SKIT - Correction Kit

## Cinegel Sampler Kit

This kit contains: twelve (30.48cm x 30.48cm) filters, one of each colour

3008	Tough Frost
3026	Tough White Diffusion
3029	Silent Frost
101	Yellow
106	Primary Red
139	Primary Green
201	Full CT Blue
204	Full CT Orange
207	Full CTO +.3ND
136	Pale Lavender
162	Bastard Amber
117	Steel Blue

No. 11009010SKIT - Variety



## CalColor Kit

The CalColor Kit consists of 25cm x 30cm sheets of the 32 colours in the CalColor range.

No. 224010

25cm x 30cm CalColor Kit

## Diffusion Kit

This kit contains: twelve (30.48cm x 30.48cm) filters, one of each colour

3000	Tough Rolux
3001	Light Rolux
3002	Soft Frost
3006	Tough Spun
3008	Tough Frost
3010	Opal Tough Frost
3015	Light Tough Silk
3022	1/4 Tough Spun
3026	Tough White Diffusion
3027	Tough 1/2 White Diffusion
3028	Tough 1/4 White Diffusion
3029	Silent Frost

No. 11009020SKIT - Diffusion

# SLEEVES

## Quick Color Sleeves **NEW!**

Introducing Quick Color Sleeves—put any colour on virtually any fluorescent light source, fast and affordable.

Putting colour on your fluorescent light sources is easier and gentler on your budgets – using Rosco's newest colour sleeve product, Quick Color Sleeves. This gel-only product is a flat welded tube of Rosco colour filter, made in any colour from any line of Rosco gel. Folded flat for easy shipping and storage, the sleeve puffs open like an envelope to slide over any size or shape of fluorescent tube, from small T3 and T5 lamps to larger T12 and biaxial shapes. Quick Color Sleeves come in 1.22m lengths but are easily cut with scissors or a knife.



Add accent colours to restaurants, theatres, or other hospitality centers. Change colours to suit different occasions and holidays—no technical expertise required. Just slip off the old Quick Color Sleeve and replace it with a new colour. Adjust colour balance in television studios or reduce glare on location shoots in just a few minutes using neutral density or any other correction filter.

Custom sizes can be made to order and Quick Color Sleeves can be made from any plastic colour filter, though minimum quantities may apply. For bulk applications, continuous rolls of Quick Color Sleeves are also available. Contact Rosco for details.

110 08430 4805 T5 x 1.22 m  
110 08430 4808 T8 x 1.22 m  
110 08430 4812 T12 x 1.22 m

Please specify Rosco gel colour when ordering.



## Fluorescent Sleeves™

For simple and economical control of fluorescent lighting, Roscosleeves can be supplied in any Rosco filter colour—or combination of colours) Roscolux, Cinegel or E-Colour+. Not recommended for use with High Output or Very High Output lamps. Sleeves are available in: 0.61m, 1.22m and 1.52m

All are available with 1 colour, 1 colour + UV and Clear sleeve

T 5  
T 8  
T12

Custom lengths are available. Call for pricing. Additional end caps available.

## ChromaSleeves

ChromaSleeves are body-coloured, extruded polycarbonate sleeves with an added UV absorber to prevent premature colour fading. Available in nine standard stocked colours or custom colours matched to any Rosco filter. Each sleeve comes with two end caps which fit snugly over the ends and will hold the lamps in place even if broken, preventing shattered glass from falling. ChromaSleeves for T5 or T8 lamps are 1.22m long, in any standard colour and includes UV absorber and end caps.

No. 110 08410 Dark Blue	No. 110 08415 Yellow
No. 110 08411 Green	No. 110 08416 Light Blue
No. 110 08412 Red	No. 110 08417 Amber
No. 110 08413 Purple	
No. 110 08414 Pink	

For custom colours: minimum order of 2,400 linear feet per colour, per diameter. Allow 2–4 weeks of delivery.

# FILTER ACCESSORIES

## PROTECTIVE FILTERS

### Thermashield™

This specialized filter incorporates an advanced coating which reflects infrared energy. When used in conjunction with Roscolux or Cinegel colour filters, Thermashield prevents the colour filters from absorbing IR energy as heat, thus allowing the filters to last much longer. Thermashield is extremely effective in protecting colour filters from light sources that are IR rich, its 7 mil polyester base limits its use to fixtures of 1000 watts or less (1250 watts at 240V). It is not suited for extremely hot light sources such as Xenon or HMI. Users should be careful to follow the package instructions and install Thermashield with the reflective coating towards the lamp.

No. 199510	30 cm x 30 cm
No. 199511	50 cm x 61 cm

### Super Heat Shield™

Super Heat Shield is an extremely heat resistant plastic that acts as a barrier, blocking the heat of a fixture. For maximum efficiency, a minimum 2.5cm air space must be maintained between Super Heat Shield and the colour filter.

No. 1991	50 cm x 61 cm sheet
No. 19912	61cm x 15.24 cm roll
No. 19913	1.22 m x 7.62 m roll
No. 19911	61cm x 7.62m

### UV Filter™

Rosco UV Filter effectively extends the life of your colour filter, by absorbing the damaging ultraviolet energy that can prematurely fade dyes. While it is not possible to determine the length of time a filter will last without fading, using the UV Filter will extend the life of unprotected gel by three times or better. This is especially useful in T5 and T8 fluorescent lamps.

No. 31141	50 cm x 61 cm sheet
No. 3114	61 cm x 15.24 cm roll
No. 311413	1.22 m x 7.62 m roll



### Lens/Reflector Cleaner

The professional's choice for over 50 years. Especially designed for cleaning lenses, mirrors, reflectors, glass and dichroic filters, and other fine-quality optics. Easy-to-use and fast drying. Quickly removes dirt, residue, smudges and fingerprints. Free of ammonia, detergents and glycerine. The new handy spray bottle is particularly suited for lighting crews and rental shops, when cleaning lenses and reflectors in moving lights, as well as standard lighting fixtures.

No. 72021	60ml bottle
No. 7202	60ml bottle x 10
No. 72023	236ml spray bottle
No. 72024	236ml spray bottle x 12
No. 72025	473ml bottle
No. 72026	473ml bottle x 6



### Lens Tissue

Premium, lightweight, disposable, micro-fiber tissue for cleaning lenses, filters and optics. Lintless and static-free. Contains no abrasives or silicone. Best when used together with Rosco Lens Cleaner. Handy pocket-size 10.16cm x 15.24cm booklet, containing 100 sheets.



No. 74461	1 x booklet (100 sheets)
No. 7446	10 x booklets (1000 sheets)
No. 855072020204	Lens Cleaner Towlette
No. 855B72020204	Lens Cleaner Towlette Pack of 25

## The Professional's Guide to Colour and Correction Filters

"Filter Facts", Rosco's 32-page manual, is the best compendium you'll find on using and selecting light control filters. It reviews all the photographic light sources and their properties, including natural daylight, artificial daylight (such as HMI), tungsten-halogen and incandescent lamps. It also reviews the industrial discharge sources, such as fluorescent, Mercury, Sodium, etc) and the filters you need to correctly work with these various sources. Individual copies of "Filter Facts" are free from Rosco or any Rosco film or TV lighting dealer, or can be downloaded from Rosco's website.

# BUTTERFLIES AND OVERHEADS



## Butterflies and Overheads

A number of Cinegel materials are available to fit the standard butterfly and overhead frames used in motion picture and television production. These can be produced from our standard range of products such as Soft Frost or Scrim, or as a custom order, with products from the filter range such as CTO's or CTB's to whatever size and finishing you require. Choose the colour correction filter you need from the Cinegel range; Daylight Conversion which lowers colour temperature as required or Tungsten Conversion filter which raises colour temperature as required. All materials are supplied edge-finished with binding and grommets. Filter grip panels are sewn on to a fabric edge tape, which gives strength and flexibility, up to any size. 3014 and 3029 have an ultrasonic welded seam every 1.22m, 3030, 3032, and 3034 have a sewn hem.

Available in sizes to fit standard grip frames, or any custom size required.

Single Net - Black  
Double Net - Black  
Single Net - White  
Double Net - White  
Black Solid  
White Solid  
White Sheet  
China Silk - White  
China Silk - Black  
Artificial Silk - White  
Artificial Silk - Black

Artificial 1/4 Silk - White  
Artificial 1/4 Silk - Black  
Grid Cloth (Full/Half/Quarter)  
Silent Grid Cloth (Full/Half/Quarter)  
Griffolyn B & W - T55  
Griffolyn B & W - T85  
Ultrabounce  
Silver Lame  
Gold Lame  
S/G Checkerboard  
Silver Dayflector

Gold Dayflector  
Muslin (Bleached)  
Muslin (Unbleached)  
Soft Frost  
Hi-Lite  
ChromaKey Blue  
ChromaKey Green





# ROSCOSHADES

## RoscoShades

RoscoShades, designed for permanent installation in television studios and other broadcast facilities, offer complete control over exterior light intensity and colour temperature. The shade system can be equipped with any of Rosco's Academy Award® winning light control filters.

RoscoShades are particularly useful in studios where the view from the window is part of the television picture. They are also useful in situations where the windows require blacking out from time to time, such as in churches that broadcast worship services.

RoscoShades are custom designed to fit your specific windows and filter needs. They are US made and available in either manual pull or motorized drive systems. The latter is often chosen where the windows are particularly large, or in hard to reach locations. Up to five different filters can be deployed in the RoscoShades system.



*The electronic motor control allows the correct filter to be deployed on the window in just a few seconds.*



## **RoscoVIEW System**

The RoscoVIEW is comprised of two separate components:

- 1) RoscoVIEW Film for the window.
- 2) RoscoVIEW Filter for the camera.

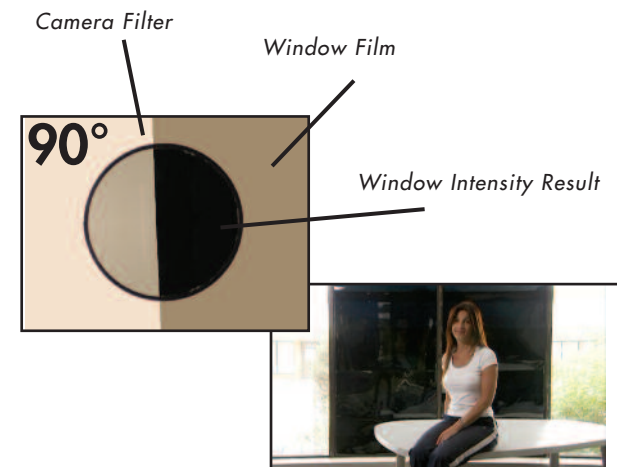
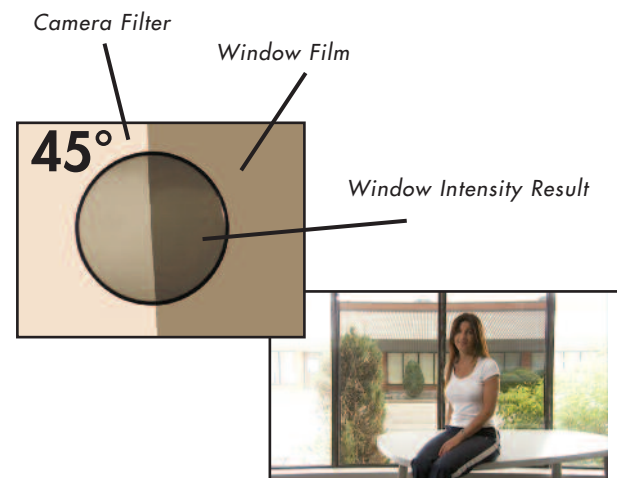
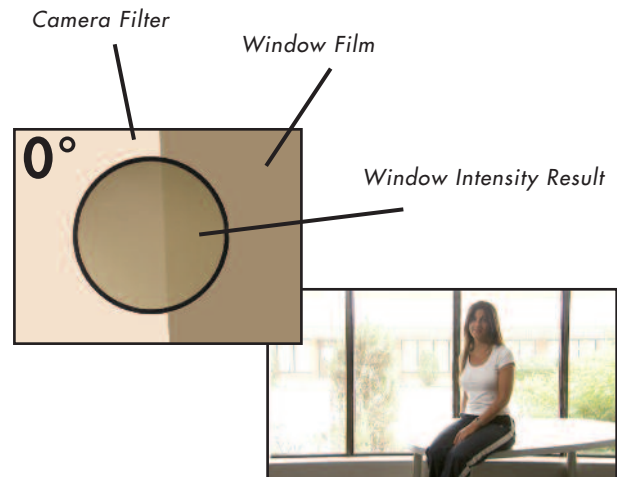
When utilized together, you are able to instantly control 100% of exterior brightness as seen through windows without effecting the lighting and exposure within the studio.

## **Features:**

- Optically Clear, wide width, high transmission film.
- Neutral grey.
- UV Resistant.
- Neutral Density equivalent: less than 1 stop at 0° linear.
- Near total blackout at 90° cross polarization.
- 1.42m x 2.44m rolls.
- Also available 1.42m wide x linear metre for custom sizes.

## **Benefits:**

- You can instantly compensate for changes in the daylight exposure as seen through the windows.
- Reduce studio down-time, no more change out of filter, increase shooting time.
- Great for areas where it is difficult to re-apply filter regularly.
- More economical for larger window surfaces.
- Any size window can be accommodated by seaming two or more panels together.
- RoscoVIEW Film can be mounted in frames or can be incorporated on the RoscoShade™ system.



# TRUCOLOR IR CAMERA FILTER

3.3mm thick optical glass camera filter restores proper colour saturation in situations where the use of heavy neutral density filter washes out colour.

The Rosco TruColor IR Camera filter balances the visible and infrared light allowing the camera sensors to render proper colour saturation and restores the colour fidelity in the finished composition.

No. 1204 8010 4565	10.16cm x 14.35cm
No. 1204 8010 5656	14.35cm x 14.35cm
No. 1204 8010 6666	16.76cm x 16.76cm



*Without TruColor IR Camera Filter*



*With TruColor IR Camera Filter*

## LIGHT CONTROL

### Cinefoil™

Cinefoil is a matte black aluminum material that virtually soaks up light. Ideal for masking light leaks and/or eliminating unwanted reflections. It can be quickly molded to form barn-doors, flags and other configurations.

No. 360112	Cinefoil	61cm x 7.62m
No. 360113	Cinefoil	30cm x 15.5m

#### Cinefoil in a bag

No. 360114	Cinefoil	1.22m x 7.62m
No. 101P10012425	Cinefoil	61cm x 7.62m
No. 101P10011250	Cinefoil	30cm x 15.5m

### Roscopaks™

Roscopak materials are light in weight, yet strong and durable. These materials can be taped or tacked to virtually any wall, ceiling or panel to turn that area into an efficient reflector. Each Roscopak measures 1.2 m x 1.4 m, and is packaged in a handy pocket size pouch.

No. 35850910	Roscopak S/G (silver/gold)
--------------	----------------------------

### Matte Black Photofoil™

Cinefoil™ is now available in convenient shorter lengths for still photographers, videographers and students. Packaged in a protective polytube, Photofoil offers the same light control properties at an economical price.

No. 101 01001 1210	Matte Black Photofoil, 30cm x 3.48m
No. 101 01001 2410	Matte Black Photofoil, 60cm x 3.48m

### Polarizing Filters

This neutral grey linear polarizing film is used in front of lights to reduce the glare caused by smooth surfaces such as glass, water, paper and certain metallic objects. Especially effective when used in conjunction with a polarizing filter at the lens (cross polarization). Should be placed at a slight distance from hot lights.

No. 730011	Sheet:	43cm x 51cm
No. 730012	Roll:	43cm x 30.5cm
No. 730013	Roll:	43cm x 15.24cm

### Reflection Media

Rosco's reflector materials offer a wide variety of choices for surfacing reflector boards or for use wherever reflected light is required. The product designation generally indicates the quality of the reflection. Rosco's Cinegel swatchbook should be consulted for details.

Rolls are 122 cm x 7.6 m.

No. 3801	Roscoflex M (mirror)
No. 3802	Roscoflex H (hard)
No. 3803	Roscoflex S (soft)
No. 3804	Roscoflex SS (supersoft)
No. 3805	Roscoflex G (gold tinted)
No. 3830	Spun Silver
No. 3809	RoscoScrib (perforated silver/black)
No. 3812	Featherflex S/G (silver/gold)
No. 3813	Thin Mirror - S (1.52m x 6.10m)
No. 3814	Thin Mirror - G (1.52m x 6.10m)
No. 3840	Cinebounce - White/Black



## LitePad™ High Output & Daylight

Rosco Litepad HO (high output) & DL (daylight) are slim profile light sources that generate a soft even beam of light and almost no heat. Their small form factor and light weight make the Rosco LitePad HO & DL perfect for use in many places where a larger, typical luminaire could not fit.

LitePad HO: is a simple, fast and economical solution for film, video and still photography, as well as a diverse range of projects in theatre, scenery, architecture or retail lighting.

LitePad DL – for less demanding projects, consumes 25% less energy while still providing the soft illumination that has made LitePad so popular, recommended for display, architectural and event lighting.



Litepad kit

### Specifications:

Colour Temperature: 6000° Kelvin  
Thickness: 0.3" (8 mm)

#### Litepad™ HO

No. 290203060240 - 76mm x 152mm (3"x6") - 240V  
No. 290203060000 - 76mm x 152mm - no transformer  
No. 290203120240 - 76mm x 305mm (3"x12") - 240V  
No. 290203120000 - 76mm x 305mm - no transformer  
No. 290206060240 - 152mm x 152mm (6"x6") - 240V  
No. 290206060000 - 152mm x 152mm - no transformer  
No. 290206120240 - 152mm x 305mm (6"x12") - 240V  
No. 290206120000 - 152mm x 305mm - no transformer  
No. 290212120240 - 305mm x 305mm (12"x12") - 240V  
No. 290212120000 - 305mm x 305mm - no transformer  
No. 290224240240 - 610mm 610mm (24"x24") - 240V  
No. 290300030240 - 76mm Circle (3") - 240V  
No. 290300030000 - 76mm Circle - no transformer  
No. 290300120240 - 305mm Circle (12") - 240V  
No. 290300120000 - 305mm Circle - no transformer

#### No. 2902 4000 BKIT LitePad™ HO Kit

Contains 1 of each size of the above (excluding 305mm circle and 610mm x 610mm), 4 x 3amp transformers, 1 x Car Adaptor, 4 x Y Splitter, 4 x Extension Cable, 1 x 4 way splitter, 1 x AA battery holder, 1 x 4 Pin Adaptor Cable, 1 x Anton Bauer Adapter Cable, 1 x 76mm bracket, 2 x 152mm bracket, 2 x 305mm bracket, 1 x Single Fade Dimmer, 1 x 1550 Pelican Case, 1 x Cinegel Swatchbook, 1 x Gel Marker.



*Its slim profile and low power requirements make LitePad™ a welcome addition to any film or television lighting scheme.*



*LitePad generates virtually no heat, so it is ideal for photo or video shoots. Five LitePad™ units were used to illuminate this shot of ice cream.*

Operating Temperature: -30C – +85C  
Lamp Life: 100,000 hrs.

#### Litepad™ DL

290103030240 - LitePad DL 76mm x 76mm (3"x3") - 240V  
290103030000 - LitePad DL 76mm x 76mm - no transformer  
290103060240 - LitePad DL 76mm x 152mm (3"x6") - 240V  
290103060000 - LitePad DL 76mm x 152mm - no transformer  
290103120240 - LitePad DL 76mm x 305mm (3"x12") - 240V  
290103120000 - LitePad DL 76mm x 305mm - no transformer  
290106060240 - LitePad DL 152mm x 152mm (6"x6") - 240V  
290106060000 - LitePad DL 152mm x 152mm - no transformer  
290106120240 - LitePad DL 152mm x 305mm (6"x12") - 240V  
290106120000 - LitePad DL 152mm x 305mm - no transformer  
290112120240 - LitePad DL 305mm x 305mm (12"x12") - 240V  
290112120000 - LitePad DL 305mm x 305mm - no transformer

# SETTING THE SCENE

## Backdrops and Digital Imaging

Rosco's Digital Imaging division supplies custom imaging products for motion pictures, television, theatre, architectural and display venues. Rosco Day/Night Backdrops were honoured with an Emmy® from the Academy of Television Arts and Sciences and a Technical Achievement Award® from the Academy of Motion Picture Arts and Sciences.

The company offers a large selection of rental backdrops, an extensive image library, as well as two decades of experience in photography and production for custom backdrops.

For a FREE CD showing the full range of rental backdrops contact Rosco or your local dealer. Alternatively you can log onto our website at: [www.roscodigital.com](http://www.roscodigital.com).



*A day/Night mural in use on a set*



You can view, sort and print our rental backdrops online at [www.roscodigital.com](http://www.roscodigital.com)



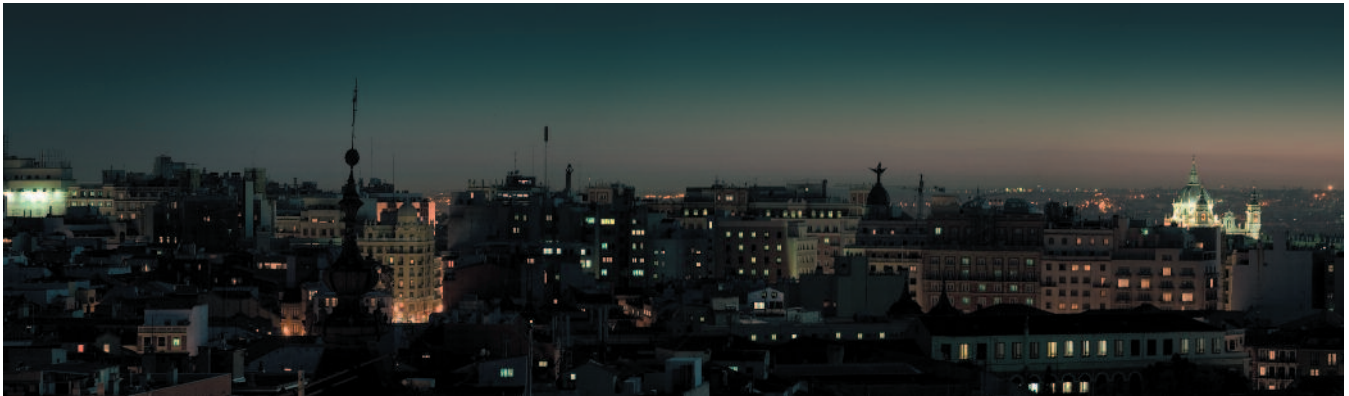
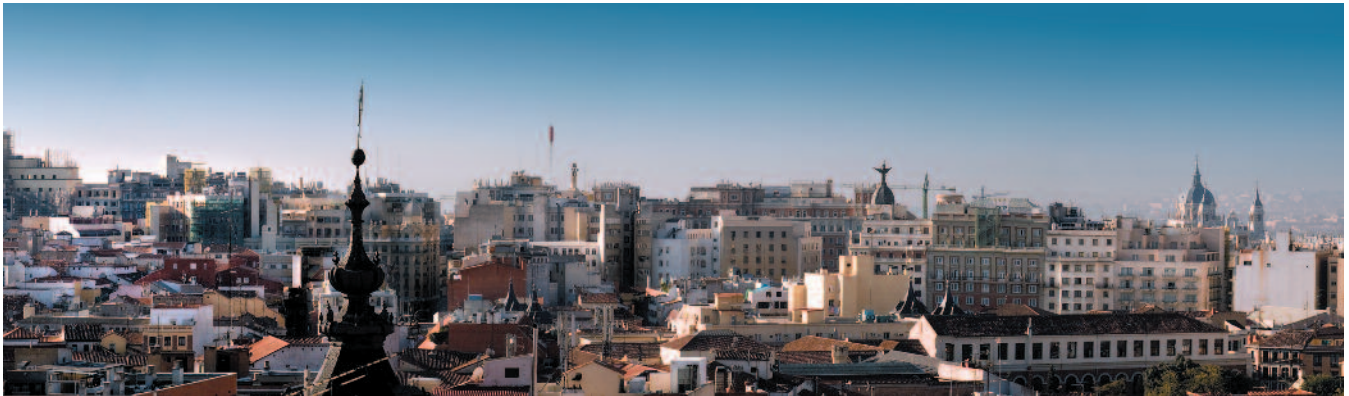
*Rosco Day/Night Backdrop created by Rosco for "The Bourne Ultimatum", Production Designer: Peter Wenham, Supervising Art Director: Alan Gilmore, Director of Photography: Oliver Wood, Photography by Phil Greenstreet of Rosco*



# DIGITAL BACKDROPS



*Day/Night Backdrop used for the 2003 film "Johnny English"*



*The above backdrop was commissioned by Louis Valles (Koldo) for Bocaboca Producciones for a Spanish series called "Con do Tacones"*

*Rental backdrop shown below, R-0099 in Rosco rental catalogue.*



*Top shows day image when lit from front  
Bottom shows night image when lit from back.*



# DIGITAL COMPOSITING



DigiComp is Rosco's trade name for fabric, paint and tape precisely crafted to allow seamless compositing for film, video and digital use. In the modern compositing or matting process, images are overlaid on a surface for acceptance by a film or video camera. The success of the composited image depends directly on the luminance or brightness as well as the chroma or colour purity of the matte background. That's why backgrounds of DigiComp materials are so useful for film or television professionals.

DigiComp fabrics are 100% cotton materials impregnated with blue or green colour precisely matched to the DigiComp paints and tape. The paints are carefully developed pigments in a flexible vinyl acrylic binder for adhesion to a wide variety of substrates. The DigiComp tapes are non-reflective gaffers tapes which will not leave a sticky residue when removed.



## DIGICOMP® CABLE **NEW!**

Rosco's precisely crafted DigiComp line of aircraft cable allows seamless compositing for flying scenery and actors in front of compositing screens created using DigiComp paint and fabric, freeing up hours of post-production time spent on removing black rigging cables.

The steel cable is coated with a flexible PVC vinyl that moves easily through any commonly used rigging equipment.

### PRODUCT SPECIFICATIONS

2.4 mm DigiComp cable  
1.6 mm 7x7, coated diameter 2.4 mm  
217 kg rating, 152 m spool

No. 850 57075 0938 DigiComp Green Cable  
No. 850 57055 0938 DigiComp Blue Cable

4.8 mm DigiComp cable  
3.2 mm 7x19, coated diameter 4.8 mm  
917 kg rating, 52 m spool

No. 850 57075 1875 DigiComp Green Cable  
No. 850 57055 1875 DigiComp Blue Cable

6.4 mm DigiComp cable  
4.8 mm 7x19, coated diameter 6.4 mm  
1905 kg rating, 52 m spool

No. 850 57055 2500 DigiComp Green Cable  
No. 850 57075 2500 DigiComp Blue Cable

### DIGICOMP® PAINT

DigiComp Blue		DigiComp Green	
No. 57050128	3.79 Litres	No. 57070128	3.79 Litres
No. 57050640	18.95 Litres	No. 57070640	18.95 Litres

### DIGICOMP® TAPE – 50 mm x 50 m

No. 57055050	DigiComp Blue Tape
No. 57075050	DigiComp Green Tape

### DIGICOMP® FABRIC – 1.47m wide

No. 57054830	DigiComp Blue Fabric	9.14m Bolt
No. 57054860	DigiComp Blue Fabric	18.28m Bolt
No. 57074830	DigiComp Green Fabric	9.14m Bolt
No. 57074860	DigiComp Green Fabric	18.28m Bolt

**NEW!**

## CHROMA FLOOR

Rosco's new Chroma Floor solves the long-standing problem of repainting your studio floor for every shoot. Chroma Key Blue on one side and Chroma Key Green on the other make Chroma Floor an ideal addition to any studio. Precise colour matching with Rosco Chroma Key paints allows for seamless compositing.

Manufactured of lightweight portable vinyl, the floor is easy to install, easy to clean and easy to maintain. Chroma Floor is also great for location shots.

Width: 1.6 m	Length: 40 m
Thickness: 1.3 mm	Weight: 113.40kgs per roll
Colours:	Blue/Green Reversible

No. 300 097 206 301 Blue/Green Chroma Floor

## BLUE/GREEN DVD

With over 30 years experience in the manufacture of compositing products, Rosco has become a trusted resource for professional TV & Filmmakers the world over. Rosco has teamed up with award winning Visual Effects Supervisor Peter Kuran to produce a DVD designed to give a concise guide to anyone who needs an introduction to Blue/Green production. The DVD looks at how best to light a Blue/Green scene, how to choose between Blue and Green and how to make best use of the full Blue/Green range of products. Supported by a series of reference pdfs, the Basic Blue Screen and Green Screen Photography DVD is now available from your Rosco dealer.

**Please note:** The DVD is viewable in DVD Rom players, US and Multi Format DVD Players only. Not compatible with European DVD Players.





# VIDEO PAINTS



## Video Paint Ultimatte®

Rosco Ultimatte® Paints are the approved Ultimatte® Paint System. These paints were designed in conjunction with the Ultimatte® technical staff to meet the requirements of their keying effects systems. Super Blue is a purer blue designed for use in film production. Vinyl acrylic paints can be used on nearly any surface. Available in 3.79 Litres

No. 57201	Ultimatte® Blue
No. 57211	Ultimatte® Green
No. 57221	Ultimatte® Super Blue

### Ultimatte® Colours

	Red	Green	Blue
Blue	22	40	82
Green	29	84	36
Super Blue	7	18	72

These values were measured with an Ikegami EC-35 camera with Plumbicon tubes. The iris was set so that an 89.9% reflective chip on a Porta Pattern 11 step chip chart was at 100 IRE units, the gamma was set to 0.45 and the knee circuit was turned off. Different cameras may yield different levels even under the same conditions.



## Chroma Key™

Rosco Chroma Key Paints have been specifically formulated to provide high luminance values and colour saturation for keying effects. The acrylic colours provide high build, one-coat coverage for use on nearly any surface.

Available in: 3.79L and 18.89L

No. 57101	3.79L Chroma Key Blue Paint
No. 5710105	18.95L Chroma Key Blue Paint
No. 57111	3.79L Chroma Key Green Paint
No. 5711105	18.95L Chroma Key Green Paint
No. 2420004	Chroma Key Blue Material
No. 2420005	Chroma Key Green Material
No. 2420006	Chroma Key Tape Blue 50mm x 50m
No. 2420007	Chroma Key Tape Green 50mm x 50m
No. 300 09720 6301	Chroma Key Floor Blue/Green

	Luminance	Vectroscope Phase Angle
Blue	52	342
Green	57	242



## TV Paint™

Specifically formulated for the sensitive contrast requirements of standard television systems, this versatile acrylic paint can be applied to nearly any surface and comes ready to use right out of the bucket. TV White and Black are completely intermixable and allow the user to achieve intermediate greys. Featuring one-coat coverage, this system dries to a matte, non-reflective finish and allows for easy touch-up.

TV WHITE – A neutral grey that meets the specifications for 60% reflectance (maximum brightness intended for transmission).

No. 573516 3.79 Litres

TV BLACK – A rich, matte black that meets the specifications for 3% reflectance (minimum brightness intended for transmission).

No. 574017 3.79 Litres

# INDEX

**A** Acrylic Panels . . . . .8

**B** Butterflies and Overheads . . . .13  
Blue/Green DVD . . . . .20

**C** CalColor . . . . .9  
CalColor Kit . . . . .10  
Chroma Floor . . . . .20  
Chroma Key Paint . . . . .21  
ChromaSleeves . . . . .11  
Cinedichro . . . . .8  
Cinefoil . . . . .16  
Cinegel Sampler Kit . . . . .10  
Cinegel Swatchbook . . . . .6  
Cinelux . . . . .9  
Colour Correction Kit . . . . .10  
Colour Effects Kit . . . . .10

**D** Daylight Conversion Filters . . . .5  
Diffusion Kit . . . . .10  
Diffusion Material . . . . .7  
Digicomp Cable . . . . .20  
Digicomp Fabric . . . . .20  
Digicomp Paint . . . . .20  
Digicomp Tape . . . . .20  
Digital Backdrops . . . . .18

**E** E-Colour+ . . . . .3

**F** Filter Facts Brochure . . . . .12  
Fluorescent Light Filters . . . . .6  
Fluorescent Sleeves . . . . .11

**H** HMI Light Control Filters . . . . .6

**L** Lens/Reflector Cleaner . . . . .12  
Lens Tissue . . . . .12  
LitePad . . . . .17

**N** Neutral Density Filters . . . . .8

**P** Photofoil . . . . .16  
Polarizing Filter . . . . .16

**Q** Quick Color Sleeves . . . . .11

**R** Reflection Media . . . . .16  
Roscopaks . . . . .16  
RoscoShades . . . . .14  
RoscoVIEW . . . . .15

**S** Sun 85 Filters . . . . .8  
Super Heat Shields . . . . .12  
Storaro Selection . . . . .9

**T** Thermashield . . . . .12  
TruColor IR Camera Filter . . . .16  
Tungsten Conversion Filters . . . .5  
TV Paint . . . . .21

**U** Ultimatte Paint . . . . .21  
UV Filter . . . . .12



**Roscolab Limited**  
**Kangley Bridge Road**  
**Sydenham**  
**London SE26 5AQ**  
**Tel: +44 (0)20 8659 2300**  
**Fax: +44 (0)20 8659 3153**  
**E-mail: [contact@rosco.com](mailto:contact@rosco.com)**

**German Office:**  
Görlitzer Str.2, D-33758 Schloss Holte-Stukenbrock  
Tel: +49 (0)5207 995989 Fax: +49 (0)5207 925 989

**Netherlands Office:**  
Claus Sluterweg 125/1b, 2012 WS Haarlem  
Tel: +31 (0)23 5288 257 Fax: +31 (0)23 5286 754

**Rosco Ibérica:**  
C/Oro 76 Polígono Industrial Sur, 28770 Colmenar Viejo, Madrid  
Tel: +34 918 473 900 Fax: +34 918 463 634

**French Office:**  
44-50 Avenue du Capitaine Glarner, Le Baldi /Bâtiment D/1er étage,  
93400 Saint-Ouen, France  
T: +33 (0)1 58 34 99 99 F: +33 (0)1 58 79 29 29

**Rosco Laboratories Inc:**  
52 Harbor View Avenue, Stamford, CT 06902, USA  
Tel: +1 203 708 8900 Fax: +1 203 708 8919

9420 Chivers Avenue, Sun Valley, CA 91352, USA  
Tel: +1 818 543 6700 Fax: +1 818 662 9470

**Rosco Laboratories Ltd:**  
1241 Denison St. No.44, Markham, Ontario L3R 4B4, Canada  
Tel: +1 905 475 1400 Fax: +1 905 475 3351  
Unit 107, 3855 Henning Drive, Burnaby, Vancouver V5C 6N3, Canada  
Tel: +1 604 298 7350 Fax: +1 604 298 7360

**Rosco do Brasil Ltda**  
Rua Visconde de Itaboraí, 141, Tatuapé, São Paulo-SP, Cep: 03308-050, Brasil  
Tel: +55 11 2098 2865 Fax: +55 11 2098 0193

**Rosco Australia Pty Ltd:**  
42 Sawyer Lane, Artarmon 2064, New South Wales, Australia  
Tel: +61 2 9906 6262 Fax: +61 2 9906 3430

*“Rosco leads with innovative solutions allowing creative people to achieve their vision while creating a compelling culture and sustainable growth.”*